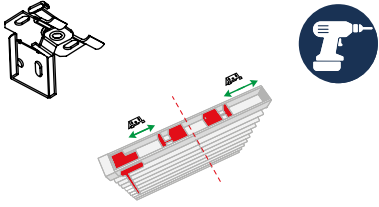


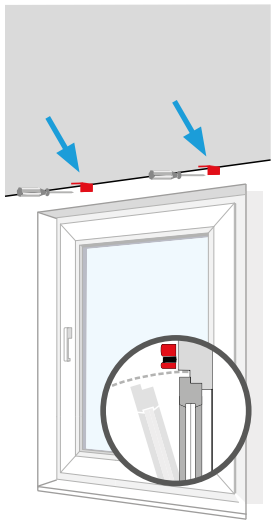
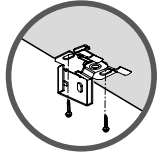


Instrukcja montażu żaluzji poziomych 25 mm aluminiowych, drewnianych, bambusowych

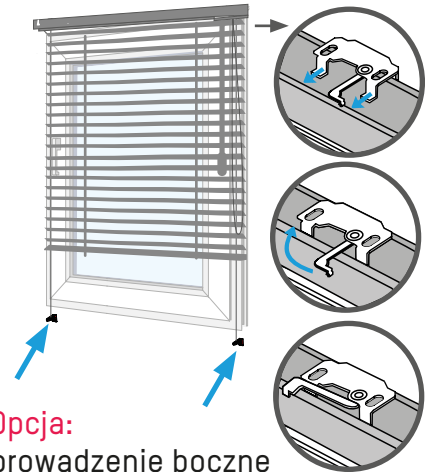
Montaż do sufitu



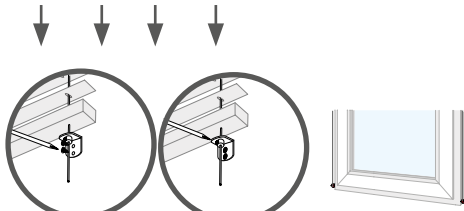
1



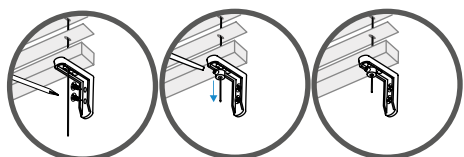
2



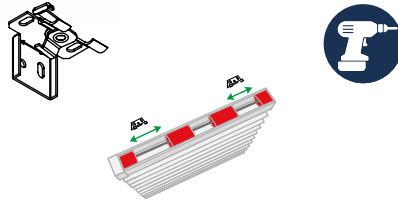
Opcja:
prowadzenie boczne



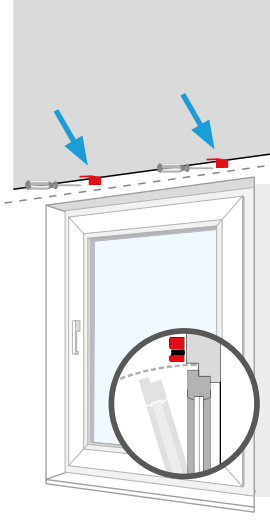
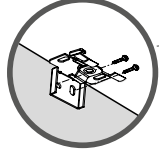
lub



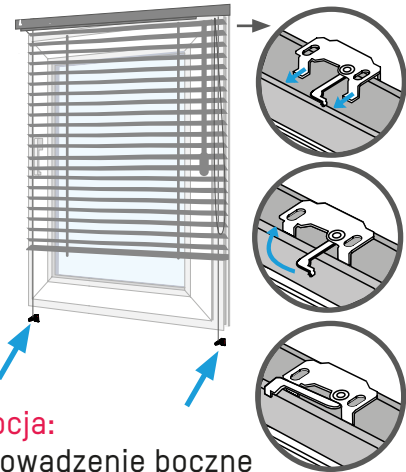
Montaż do ściany / na ramie skrzydła okiennego



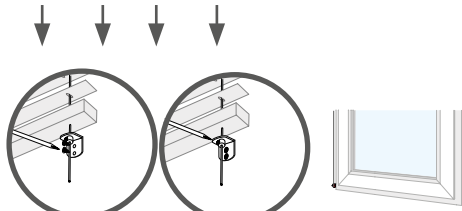
1



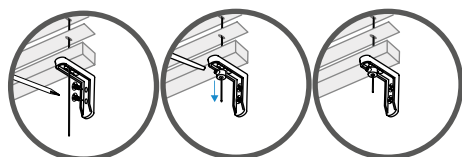
2



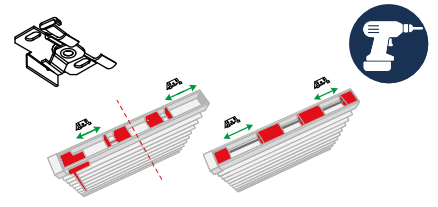
Opcja:
prowadzenie boczne



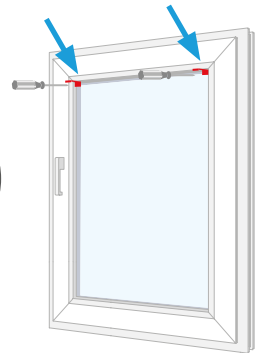
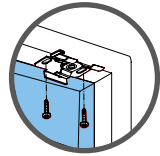
lub



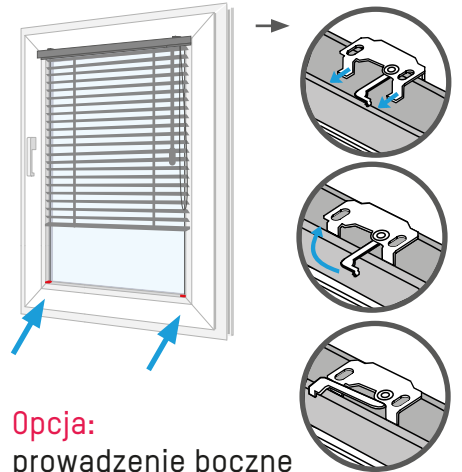
Montaż między listwy przyszybowe - w świetle szyby



1



2



Opcja:
prowadzenie boczne

